

DOCUMENTO DE DISCUSIÓN

DD/06/04

Tender Offers in South America: Do they Convey Good News to the Market?

*Darcy Fuenzalida, Samuel Mongrut, Mauricio
Nash y Juan Tapia*



UNIVERSIDAD DEL PACÍFICO
CENTRO DE INVESTIGACIÓN

DOCUMENTO DE DISCUSIÓN

DD/06/04

© 2006 Centro de Investigación de la Universidad del Pacífico

DD/06/04

Documento de Discusión

Ofertas Públicas de Adquisición en Sudamérica: ¿Significan buenas noticias para el mercados?

Elaborado por Darcy Fuenzalida, Samuel Mongrut, Mauricio Nash y Juan Tapia

Junio 2006

Resumen

Los estudios realizados en mercados de capitales desarrollados han encontrado retornos anormales positivos de hasta 15% sobre el valor de mercado de la empresa a ser adquirida en el momento de anunciarse una Oferta Pública de Adquisición (OPA) sobre la misma. En Sudamérica existen pocos estudios sobre si el lanzamiento de una OPA genera un incremento sobre el valor de mercado de la empresa a ser adquirida. No obstante, los estudios realizados reportan rendimiento anormales positivos entre 25% y 50% relacionados con el anuncio de la primera OPA. En este trabajo, se argumenta que la razón de estos excesivos rendimientos anormales se debe a que han sido obtenidos asumiendo que los mercados se encuentran completamente segmentados aplicándose el modelo de mercado con un índice local. Mediante el uso de un modelo de mercado que permite la integración parcial entre cinco mercados emergentes Sudamericanos, se muestra que si existen retornos anormales positivos antes, durante, y después del momento del anuncio de la fecha de la primera OPA. Sin embargo, el retorno anormal positivo asociado a la fecha del anuncio es del orden del 8%. De forma consistente, se obtiene un retorno anormal positivo levemente más alto que el anterior usando un modelo del mercado que considera además el riesgo de pérdida que caracteriza a estos mercados. Estos resultados apuntan hacia un retorno anormal positivo más bajo en la muestra de adquisiciones considerada.

Palabras claves: Ofertas Públicas de Adquisición, estudio de eventos, mercado emergente

E-mail de los autores: darcy.fuenzalida@usm.cl, mongrut_sa@up.edu.pe,
mauricio.nash@usm.cl, juan.tapia@usm.cl

Las opiniones expresadas en los Documentos de Discusión son de exclusiva responsabilidad de los autores y no expresan necesariamente aquellas del Centro de Investigación de la Universidad del Pacífico. Los Documentos de Discusión difunden los resultados preliminares de las investigaciones de los autores con el propósito de recoger comentarios y generar debate en la comunidad académica.



UNIVERSIDAD DEL PACÍFICO
CENTRO DE INVESTIGACIÓN

1. Introduction

There have been numerous studies in the field of tender offers and on the necessary premia to get corporate control in the process of takeover in developed capital markets, but almost none for South American stock markets. International evidence, mainly in the United States, shows that there are high positive abnormal returns for the target company at the moment of announcing the tender offer.

The objective of this study is to show that positive abnormal returns related to the first tender offer are in fact lower than previous estimates if one allows capital markets to be partially integrated instead of completely segmented. Recently, Stulz (1999), and Bekaert and Harvey (2003) have shown that after financial liberalization in emerging markets, their expected returns must fall because their relative volatility with respect to the world volatility must be higher than their correlations with the world market returns. This is the case even when emerging markets are more sensitive to world events due to their financial liberalizations¹. To the extent that local and world events play a meaningful role in explaining stock returns in emerging markets there will be less variation to explain and therefore abnormal returns must be lower than otherwise.

In this research, one shows that accounting for partial integration among five South American stock markets yields positive abnormal returns, which are lower than the ones estimated by previous studies. In order to show this, one uses 17 tender offers that have been accomplished during the period 1998–2002 across five South American stock markets (Argentina, Brazil, Chile, Peru and Venezuela). In particular, one is interested in answering the following research questions: Do target South American firms offer positive abnormal returns around the announcement date of their first tender offer in a situation of partial integration? Does one find evidence of information leakage during the days previous to the announcement date of the first tender offer? Is there evidence of stock market overreaction?

In particular, one uses a hybrid multifactor Capital Asset Pricing Model (CAPM) as a market model. This is in fact just one way to represent a situation of partial integration. As pointed by Bodnar et al. (2003), a situation of partial integration is very difficult to represent because in this situation every investor has access to an incomplete but well-defined list of stocks. In order to specify this situation one needs information about all individuals and available securities for them. Hence, it may be possible that a situation of partial integration does not correspond to the hybrid multifactor CAPM. However, since the hybrid multifactor CAPM is a strange mix of the full-integration and the full-segmentation CAPM, it may be taken as a first approximation to a situation of partial integration.

The paper has been divided into six sections. In the next section one discusses the existing empirical evidence concerning tender offers, while the third section one reviews the main aspects related to event studies. The sample criteria and data description appears in the fourth section, while the methodology and results are discussed in the fifth section. In the last section one concludes the paper.

¹ In fact, the emerging market covariance with the world return may increase due to the financial liberalization.

2. Tender offers: empirical evidence

A takeover is an agreement between two parties, the controlling shareholders of a target company and the controlling shareholders of the bidder company, who the latter group wishes to acquire the company of the former group. The empirical evidence concerning tender offers is vast, so in this section one summarizes the most relevant studies for the purposes of this research.

Dodd and Ruback conducted one of the earliest studies concerning tender offers in (1977). These authors studied 172 companies traded at the New York Stock Exchange (NYSE) covering the period between 1958 and 1976. The objective of their study was to analyze the premium obtained by target companies on the announcement date of a tender offer and whether this premium was different for successful and unsuccessful bids. Using the market model, these authors found that abnormal returns of target companies acquired via successful bids was about 21%, while it was 19% for the case of unsuccessful bids. Later on, Jensen and Ruback (1983) conducted several studies between 1977 and 1983 and concluded that takeover in their sample have offered positive abnormal returns ranging between 16% and 30%.

Through the years several authors have found similar results for the NYSE and the NASDAQ. In this sense, Bradley et al. (1983) reported a premium ranging between 23% and 60% for target companies at the NYSE. Jarrell et al. (1988) studied 663 cases of successful tender offers between 1962 and 1985 and came to the conclusion that positive abnormal returns for target companies averaged 30%. Furthermore, Asquith (1988) found a positive abnormal return of 19% on NASDAQ target companies 10 days prior to a tender offer announcement, result that prompts to information leakage.

Zingales (2000) studied the magnitude of the average premium paid for voting shares in countries where such information is available. Such average premium varies enormously from country to country. In most of them it ranges between 10% and 25%, with Israel (45%) and Italy (82%) as the main exceptions. This variation can be explained by the characteristics of each country, with a probable effect on the ability to derive private gains from company control. Zingales concludes that as both local legislation and supervision improve, the premia on controlling stock will tend to be lower. Another interesting result was obtained by Moloney (2002) who found that, on average, the bidder company rewards the target company between 15% and 50% over the market price of the target company prior to the announcement of the tender offer. He concluded that there is a high positive abnormal return in the case of hostile bids and that there is a low positive abnormal return when ownership is highly concentrated and absorbed.

Although there are almost no studies for South American emerging markets, an interesting piece of evidence was offered by Fuenzalida and Nash (2003) whom studied 14 Chilean companies during the years 1995 and 2002. They conclude that there is evidence of positive abnormal returns on the announcement date of a tender offer of about 26%. Besides, these positive abnormal returns are lower in the case of public companies operating under the Law of Tender Offers.

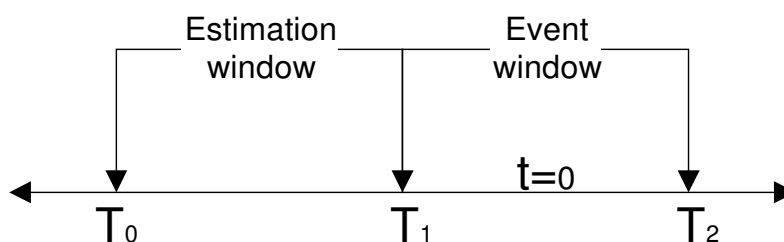
3. Issues in event studies

In conducting event studies there are several issues that one needs to account for. In this section, one reviews the main stages of the procedure. Five issues are discussed: event definition, selection criteria, estimation of abnormal returns, estimation of model parameters and tests for detecting abnormal returns. The following subsections will discuss each one in turn.

3.1 Event definition

The best results with an event study are obtained when the exact date of the event is identified. In order to do this it is crucial to first identify the event subject to scrutiny: e.g. the announcement date of a merger, an acquisition, an earnings announcement, a change in the debt rating, the adoption of an ISO standard, etc. Then, the estimation and event windows must be determined (see Figure 1).

Figure 1: Event study windows²



Using the same notation as Campbell et al. (1997), one defines $t=0$ as the event date when the announcement occurs, the interval $[T_1+1, T_2]$ is the event window with length $L_2=T_2-T_1-1$, while the interval $[T_0+1, T_1]$ is the estimation window with length $L_1=T_1-T_0-1$. When the study is being conducted with daily data, the estimation window usually is between 100 and 300 trading days (Peterson 1989).

The length of the event window usually depends on the ability to date precisely the announcement date. If one is able to date it with precision, the event window will be short and the tests to detect abnormal returns will be more powerful. Nevertheless, the length of the event window normally ranges between 21 and 121 days (Peterson 1989). Note that the event window includes the event announcement day, which occurs at $t=0$.

3.2 Selection criteria

This step is certainly a very important one since it is easy to introduce a selection bias in the definition of the sample of firms to be studied. In emerging markets the main tradeoff that one must make is between having quantitatively more firms in the sample, but with several firms subject to thin trading or having less number of firms, but actively traded. In the first case, one needs to use a procedure to test for abnormal returns in the presence of thin trading, while in the second case one has to avoid as much as possible any selection bias in the sample.

² All Figures and Tables are own elaboration unless otherwise stated.

This tradeoff is due to the low number of actively traded or liquid stocks in emerging markets. For example, the percentage of actively traded stocks, as a fraction of the total number of traded stocks per year was between 5% and 19% at the Lima Stock Exchange (LSE) during the period 1991–2002 (Mongrut 2004).

Thin trading or non-synchronous trading means that whenever a market shock occurs, it will not be incorporated immediately into the price of a thin traded stock because it is not being traded. If one does not consider the effect of thin trading, there will be a serious bias in the moments and co-moments of asset returns (for example, the beta parameters of thin traded stocks will be lower than the beta parameters of actively traded stocks). The reason for this is that time series of stock prices are taken to be recorded at time intervals of one length when in fact they are recorded at other irregular time intervals (Campbell et al. 1997).

Different ways to deal with the problem of thin trading have been suggested by Scholes and Williams (1977), Dimson (1979), and Cohen et al. (1983) in the context of market risk estimation. Each one of them tried to give an estimation of the market risk parameter (beta) in the presence of thin trading. However, as reported by Brown and Warner (1985), there is little to gain by using the procedures of Scholes and Williams (1977), and Dimson (1979) in testing abnormal returns.

What happens if one only includes few firms actively traded in the sample? A small number of firms will not represent a problem because parametric tests statistics used to detect abnormal returns converge to their asymptotic values rather quickly (Brown and Warner 1985). This implies that even in the presence of abnormal returns that do not obey a normal distribution, one can still use parametric tests invoking the Central Limit Theorem. The real problem is the potential for a selection bias. In our study, there could be observed and unobserved common characteristics among these few firms that make them more prone to become a target for a tender offer. In this sense, one cannot draw inferences for the total population of tender offers. This issue will be addressed again in the fifth section.

3.3 Estimation of abnormal returns

There are mainly three models to estimate abnormal returns: the constant-mean return model, the market model, and the market adjusted model³. Nevertheless, in this research only the market model is used. In the following sections one discusses the market model in two alternative scenarios: full-segmentation of capital markets and partial integration.

3.3.1 The market model with full-segmentation

The market model with full-segmentation states that:

$$AR_{i,t} = R_{i,t} - (\hat{\alpha}_i - \hat{\beta}_i R_{m,t}^L) \quad (1)$$

³ Brown and Weinstein (1985) have concluded that there is little value to gain in using a multifactor model (such as the Arbitrage Pricing Theory-APT) versus the market model. Furthermore, Dyckman et al. (1984) have concluded that the market model is more suitable for detecting abnormal performance.

Where:

$AR_{i,t}$: Abnormal return of stock “i” in period “t”

$R_{i,t}$: Realized return of stock “i” in period “t”

$R_{m,t}^L$: Return of a local market index in period “t”

The market model adjusts for the stock return for the local systematic risk in estimating the abnormal return. In this way, the variance of the abnormal return will be reduced because one is removing the portion of the return that is related to the local market index. Popular choices for the market index are the local equally weighted market index and the local value weighted market index. However, the former index is more likely to detect abnormal returns because it has been shown that is more correlated with market returns (Peterson 1989).

Usually, the model parameters (alpha and beta) are estimated using Ordinary Least Squares (OLS) during the estimation window. The OLS estimation of equation 1 relies on two crucial assumptions: the variance of the abnormal return is constant through time and there is no time series correlation among the abnormal returns. Hence, the model implies absence of heteroskedasticity and serial correlation. Unfortunately, these assumptions are usually not met. In particular, thin trading could generate times series dependence or serial correlation.

If there is heteroskedasticity and serial correlation in abnormal returns it is better to use a different method to estimate the model parameters such as the Generalized Autoregressive Conditionally Heteroskedastic Model (GARCH). The GARCH (1,1) is expressed in the following way:

$$\begin{aligned} AR_{i,t} &= R_{i,t} - (\hat{\alpha}_i + \hat{\beta}_i^L R_{m,t}^L) \\ AR_{i,t} &= \rho_i AR_{i,t-1} + \varepsilon_{i,t} \\ h_{i,t} &= \omega_{i,0} + \omega_{i,1} \varepsilon_{i,t-1}^2 + \omega_{i,2} h_{i,t-1} \end{aligned} \tag{2}$$

Where:

$$\varepsilon_{i,t} \sim N(0, h_{i,t})$$

Furthermore, event clustering within the same time period could generate another problem: cross-correlation among abnormal returns of different stocks. Although, Brown and Warner (1985) have noted that, unless the potential bias is substantial, it is better to assume cross-sectional independence, it is wise to avoid event clustering otherwise the statistical power of the tests will diminish.

Another problem is a variance increase due to the event announcement. This also generates the problem of heteroskedasticity. If one uses the variance of the estimation window instead of the variance of the event window, the tests statistics will yield too many rejections of the null hypothesis that the cumulative average abnormal return is equal to zero. A way to deal with this problem is by using the standardized cross-sectional test proposed by Boehmer et al. (1991).

The OLS estimation of the model parameters also relies on the assumption that abnormal returns are normally distributed. There is considerable evidence that daily stock returns (raw returns), and their respective abnormal returns, are right skewed and leptokurtic (fat tails) (Fama 1976). In emerging markets stock returns are considerable more skewed and leptokurtic than in developed markets (Bekaert et al. 1998). Although, the parametric tests statistics converge rather quickly to a normal distribution, it is advisable to estimate the model parameters using a procedure that allows for the non-normality in the cross-section of abnormal returns, such as the Theil procedure proposed by Dombrow et al. (2000) or to use a non-parametric test to test for abnormal returns. In particular, one may use two nonparametric tests: the sign test analyzed by Cowan (1992) or the rank test proposed by Corrado (1989).

3.3.2 The market model with partial integration

Emerging markets are not completely segmented, but rather partially integrated (Bodnar et al. 2003). In such a situation a better way to specify abnormal returns is by using a hybrid version of the market model where local and world events play a role in explaining stock returns:

$$AR_{i,t} = R_{i,t} - (\hat{\alpha}_i + \hat{\beta}_i^L R_{m,t}^L + \hat{\beta}_i^W R_{m,t}^W) \quad (3)$$

Where:

$R_{m,t}^W$: Return of a global market index in period "t"

This model can be estimated using OLS or the GARCH procedure, but given the high volatility of emerging markets it is better to use the later procedure instead of the former to estimate the model parameters within the estimation window.

As previously stated, stock returns in emerging markets are non-normal because they are usually right skewed. In other words, investors in these markets face substantial downside risk (Estrada 2000). In this sense, Estrada (2002) proposed a modification of the traditional Capital Asset Pricing Model (CAPM) in order to allow for downside risk, the result was the D-CAPM. This model states that what matters to expected returns in emerging markets is the downside systematic risk or downside beta as opposed to the total systematic risk or beta from the traditional CAPM.

The ex-post version of a hybrid D-CAPM can be used to estimate abnormal returns. This version is expressed in the following way:

$$AR_{i,t} = \text{Min}[R_{i,t} - \bar{R}_i, 0] - (\hat{\alpha}_i + \hat{\beta}_i^{DL} \text{Min}[(R_{m,t}^L - \bar{R}_m^L), 0] + \hat{\beta}_i^{DW} \text{Min}[(R_{m,t}^W - \bar{R}_m^W), 0]) \quad (4)$$

In this version one is considering partial integration and downside risk simultaneously. Furthermore, given the non-normality of emerging market stock returns, the parameters of model 3 and 4 can be estimated using the GARCH procedure.

3.4 Tests for abnormal returns

Once abnormal returns have been estimated for each stock, using one or more models, one has to test whether abnormal returns are statistically significant or not. This task can be performed for each day or for a time interval during the event window. The test for each day aims to test whether individual cumulative abnormal returns are statistically significant, while the test for a time interval aims to determine the statistical significance of cumulative average abnormal returns during a selected time interval for a group of stocks.

Two main situations can arise: only one event occurs per stock or each stock is subject to the occurrence of many events within the selected time interval. In both cases, one may use parametric and nonparametric tests statistics. The choice of one or more test statistics depends on the situation faced by the researcher. In emerging markets the situation usually is far from ideal, so the best way to proceed is by using a combination of parametric and nonparametric tests.

Parametric tests use standardized abnormal returns to align event period abnormal returns' volatility with its estimation period volatility and to prevent stocks with large volatility to dominate test statistics (Boehmer et al. 1991). The standardized abnormal return is given in the following way:

$$SAR_{i,t} = \frac{AR_{i,t}}{S_{i,t}} \quad (5)$$

Where:

$SAR_{i,t}$: Standardized abnormal return for stock "i" within the event window

$S_{i,t}$: Standard error

Now, one can cumulate abnormal return for each stock within the time interval $[t_1, t_2]$ in the following way:

$$CAR_i(t_1, t_2) = \sum_{t=t_1}^{t_2} SAR_{i,t} \quad (6)$$

The standard error involves information from the estimation window and from the event window because it must include the standard error of the estimate (from the estimation window) and the standard error of the forecast (from the event window).

Parametric tests can be defined to test for abnormal returns per each stock at any given date, but in this research one is interested in detecting aggregate abnormal performance for a give period or time interval. In this sense, one must define parametric and nonparametric test accordingly.

In order to aggregate abnormal returns across several stocks and events for a selected time interval $[t_1, t_2]$ (within the event window), the first step is to aggregate the individual abnormal returns considering N events. The average abnormal return for period “ t ” is as follows:

$$AAR_t = \frac{1}{N} \sum_{i=1}^N AR_{i,t} \quad (7)$$

$$\text{With: } \text{Var}(AAR_t) = \frac{1}{N^2} \sum_{i=1}^N S_{i,t}^2$$

The next step is to aggregate the average abnormal returns through the selected time interval. The result is as follows:

$$CAAR(t_1, t_2) = \sum_{t=t_1}^{t_2} AAR_t \quad (8)$$

$$\text{With: } \text{Var}(CAAR(t_1, t_2)) = \sum_{t=t_1}^{t_2} \text{Var}(AAR_t) \text{ and } CAAR(t_1, t_2) \sim N(0, \text{Var}(CAAR(t_1, t_2)))$$

The variance of CAAR assumes that different event windows do not overlap to each other (i.e. no event clustering), so one may avoid covariance terms. Then, in order to test the null hypothesis that cumulative average abnormal returns are zero, one uses the following test statistic (MacKinlay 1997 and Campbell et al. 1997):

$$J_1 = \frac{CAAR(t_1, t_2)}{\left[\text{Var}(CAAR(t_1, t_2)) \right]^{\frac{1}{2}}} = \frac{CAAR(t_1, t_2)}{\left[\frac{1}{N^2} \sum_{t=t_1}^{t_2} \sum_{i=1}^N S_{i,t}^2 \right]^{\frac{1}{2}}} \quad \text{Where: } J_1 \sim N(0,1) \quad (9)$$

Whenever one considers that cumulative abnormal returns vary across securities, it is suitable to give equal weight to the realized cumulative abnormal return of each security. This is what J_1 does.

Another possibility is to consider constant abnormal returns across securities. In this case it is more appropriate to give more weight to the securities with the lower abnormal return variance so that the power of the test will improve. In order to construct a test consistent with this possibility one must first construct a test statistic for each security using the standardized cumulative abnormal return within the selected time interval $[t_1, t_2]$ (Patell, 1976):

$$SCAR_i(t_1, t_2) = \frac{CAR_i(t_1, t_2)}{\hat{\sigma}_i(t_1, t_2)} \quad (10)$$

Where:

$$SCAR_i(t_1, t_2) \sim T\left(0, \frac{L_1 - 2}{L_1 - 4}\right)$$

The standardized cumulative abnormal return has a Student-T distribution with a null expectation. As long as the length of the estimation window increases ($L_1 > 30$), the distribution for this test converges to the standard normal distribution (Cowan and Sergeant 1996). Now, by aggregating expression 10 through the number of events within the selected time interval (Campbell et al. 1997):

$$SCAAR(t_1, t_2) = \frac{1}{N} \sum_{i=1}^N SCAR_i(t_1, t_2)$$

One obtains the second parametric test statistic:

$$J_2 = \frac{SCAAR(t_1, t_2)}{\left[\left(\frac{1}{N}\right) \frac{L_1 - 2}{L_1 - 4}\right]^{\frac{1}{2}}} \quad \text{Where:} \quad J_2 \sim N(0, 1) \quad (11)$$

$SCAAR(t_1, t_2)$: Average standardized cumulative abnormal return for the event window $[t_1, t_2]$

Brown and Warner (1985) report that the Patell's test (expression 10) is well specified under a variety of conditions. Furthermore, there is little to gain by using a more complicated test unless there is a serious problem like an increase in the variance of abnormal returns (induced by the event) or unusually high cross-correlation. If the variance of abnormal returns increases on the event date the Patell's test rejects the null hypothesis more often than the nominal significant level (Cowan and Sergeant 1996). In other words, event-related variance increases cause these tests to report a price reaction more often than expected (Cowan 1992). In order to avoid this problem, one may use the Boehmer et al. (1991) test or better known as the BMP test:

$$J_3 = \frac{\sum_{i=1}^N SCAR_i(t_1, t_2)}{\left[Var(SCAR(t_1, t_2))\right]^{\frac{1}{2}}} \quad (12)$$

Where:

$$Var(SCAR(t_1, t_2)) = \left[\frac{N}{N-1} \sum_{i=1}^N \left(SCAR_i(t_1, t_2) - \frac{1}{N} \sum_{i=1}^N SCAR_i(t_1, t_2) \right)^2 \right]$$

Due to the fact that the BMP test works with data from the event window, it can consider any event-induced variance and it is not affected by the problem of thin trading. Furthermore, the test is essentially unaffected by the presence of event-date clustering (Boehmer et al. 1991).

Concerning the problem of non-normality, one may try to tackle this problem using a nonparametric test, which does not rely on this assumption. Here, there are two choices either the generalized sign test or the rank test from Corrado (1989). In general the rank test is more powerful than the generalized sign test in detecting abnormal returns, however in the presence of event induced variance different authors favor the generalized sign test. Besides, given that in the presence of non-normality both test are well specified and equally powerful, in this research one has favor the generalized sign test over the rank test.

The generalized sign test aims to determine whether the number of securities with positive cumulative abnormal returns in the event window exceeds the expected number in the absence of abnormal security performance (Cowan 1992). The expected number of positive abnormal returns along 214-day estimation period is given by:

$$\hat{p} = \frac{1}{N} \sum_{i=1}^N \frac{1}{214} \sum_{t=1}^{214} D_{i,t}$$

In the above expression, the dummy variable “D” takes the value of one whenever there is a positive abnormal return for security “i” on day “t”, otherwise is zero. Now, if one defines “ ω ” as the number of securities in the event window with a positive cumulative abnormal return, one may write the generalized sign test statistic (S) in the following way:

$$J_4 = \frac{\omega - N\hat{p}}{\left[N\hat{p}(1-\hat{p}) \right]^{\frac{1}{2}}} \quad \text{Where:} \quad J_4 \sim N(0,1) \quad (13)$$

These four tests (three parametric and one nonparametric) will be used in the empirical part of this research.

4. Sample criteria and data description

Table 1 shows the total number of acquisitions in six South American capital markets. Only a small fraction of the total number of acquisitions fulfilled our sample criteria. The criteria to select a particular acquisition were based upon the following five requirements: the type of acquisition must be a tender offer, only target firms that have been subject to a first tender offer during the period 01/01/1998 to 12/31/2003 were selected, each firm in the sample must have a market presence of at least 60% during the estimation period and non-missing observations for the event period, there must be no other news besides the announcement of the tender offer during the analyzed period, and securities with overlapping event periods are excluded from the analysis unless they belong to different industries.

The above period of analysis was chosen because none of the acquisitions fulfilled our sample criteria during the three previous years: 1995-1997. The requirement of a market presence of at least 60% during the estimation period was meant to include as much firms as possible. However, as table 2 shows only one firm had such low market presence, the remaining firms had more than 80% presence. The indicator of presence is defined as follows:

$$P = \frac{q}{d} * 100$$

Where:

- q: Number of days in which there were at least 1 trade of the stock within the selected period
d: Total number of days within the selected period

Missing quotes were treated in the way suggested by Brown and Warner (1985): the missing quote and the succeeding period quote were removed from the analysis. This method attains the greatest sample size without affecting the identification of abnormal performance (Peterson 1989). The remaining two criteria were established to avoid any confounding effects and any cross-correlation due to event clustering, respectively.

Table 1: Total number of acquisitions in South American stock markets⁴

Country	1998	1999	2000	2001	2002	2003
Argentina	61	63	79	26	8	21
Colombia	17	22	13	3	6	8
Brazil	94	96	137	77	40	69
Chile	15	43	47	24	10	13
Peru	7	20	17	7	6	15
Venezuela	6	14	17	11	8	4

Source: Bloomberg

Applying the above selection criteria yield only 17 companies, which are reported in table 2. Two observations are in order: there was no firm in Colombia able to fulfill the sample criteria, and there was no firm able to fulfill the sample requirements in 2003. Therefore, our results only apply for the period 1998-2002.

Given the small sample size a cause of concern is the possibility for a selection bias. In particular, one may wonder if there are observed and unobserved common characteristics among these few firms that make them more prone to become a target for a tender offer. However, as Table 2 shows, it seems to be no selection bias due to observable variables. Indeed, target firms are based in different countries, the percentage acquired varies widely, bidder firms come from different countries (not reported), and target firms belong to different industries (see Figure 2).

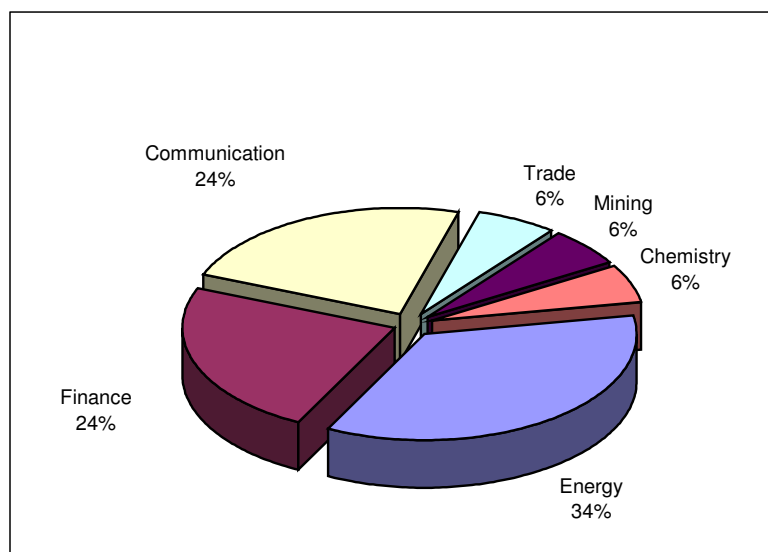
⁴ The total number of acquisitions is based on the effective date of the acquisition instead of the announcement date of the acquisition.

Table 2: Description of the sample

Country	Target	Presence	% Acquired	Announcement Date
CHILE	Santa Isabel	99,6%	14%	01/15/1998
CHILE	Banco Bhif	97,7%	8%	08/10/1998
CHILE	Enersis	99,8%	21,7%	01/25/1999
CHILE	Campos Chilenos	90,3%	51%	01/27/1999
CHILE	Gener	100%	95,7%	11/03/2000
CHILE	Laboratorio Chile	98,8%	100%	05/22/2001
PERU	Telefonica del Peru SAA	100%	60,6%	01/13/2000
PERU	Banco Continental Peru	85,6%	9.80%	11/27/2002
PERU	Cia Minera Atacocha SA	61%	41,3%	05/29/2001
PERU	Luz del Sur S.A	99,6%	25%	08/05/1999
VENEZUELA	Cia Anonima Nacional Telefonos de Venezuela - CANTV	100%	43,2%	08/29/2001
VENEZUELA	Electricidad de Caracas	99,6%	73%	05/02/2000
ARGENTINA	Telefonica Holding de Argentina SA	82%	9.30%	09/04/2000
ARGENTINA	YPF SA	100%	15%	01/06/1999
ARGENTINA	Banco Rio de la Plata SA	96%	25.50%	02/10/2000
BRAZIL	Empresa Bandeirante de Energia SA	97%	37,01%	07/06/2000
BRAZIL	Teleste Celular	86%	60,1%	06/16/1999

Sources: Bloomberg and Economatica

Figure 2: Target firms by sector



4. Methodology and results

In this section one explains briefly the different steps used in this research to determine the daily abnormal performance of stock returns. The event under study is the announcement of a tender offer from the bidder firm to the target firm. In this sense, one is interested in the announcement date of the tender offer instead of the effective date where the acquisition was made.

Around the announcement date reported in Table 2, one has defined an estimation period of 214 days and an event period of 30 days where 20 days were defined prior to the announcement date and 10 days after this date. Hence, there are 245 days per stock including the announcement date.

The market model was used to estimate daily abnormal returns per stock⁵. However, due to the fact that one is working with target firms from different countries, one needs to control for differences in the level of market integration across the five capital markets considered. Hence, it has been decided to use a hybrid version of the market model with and without downside risk. In other words equations 3 and 4 were used to estimate daily abnormal returns. The hybrid market model does not include currency risk, so one implicitly assumes that the influence of this risk upon stock prices is small⁶.

In order to account for the possibility of heteroskedasticity and serial correlation among abnormal returns, equations 3 and 4 were estimated using the GARCH (1,1) procedure. Furthermore, confounding effects were avoided, as well as event clustering unless stocks belong to different industries. Table 3 shows potential event clustering in years 1998-2001, but from Table 2 one may see that only in years 1999 and 2001 there is event clustering. However, it is unlikely to find cross-correlation because in 1999 and 2001 firms belong to different industries and in 2001 they even belong to different countries.

Following the suggestions by many authors, one has used parametric and nonparametric tests to detect aggregate abnormal performance. Three parametric tests were used (J1, J2 and J3) and one nonparametric test (J4). The first two tests were used because they have some ability to detect abnormal performance even with small sample sizes, while the BMP test (J3) was used to account for event-induced variance. The generalized sign test (J4) served to account for non-normality in the cross-section of abnormal returns.

A major concern in working with a small sample size is the possibility that one firm (an outlier) drives the results. Figures 3 and 4 in the appendix show the cumulative abnormal returns for each firm in the sample according to the two models used to estimate abnormal returns (in both figures firms were ordered from left to right). It is not true that positive abnormal returns are present only in one or two firms. In both Figures, more than 80% of the firms report positive cumulative abnormal returns.

⁵ Other models such as the constant-mean return model and the market-adjusted model were not used because there is no way to account for differences in market integration.

⁶ In the presence of substantial currency risk, it would have been better to use the International Capital Asset Pricing Model (ICAPM) analyzed by Bodnar et al. (2003).

Table 3: Tender offers per year

	98	99	00	01	02	Total
YPF SA		1				1
Banco Rio de la Plata SA			1			1
Telefonica Holding de Argentina SA			1			1
Teleste Celular		1				1
Empresa Bandeirante de Energia SA			1			1
Santa Isabel	1					1
Banco Bhif	1					1
Enersis		1				1
Campos Chilenos		1				1
Gener			1			1
Laboratorio Chile				1		1
Luz del Sur S.A		1				1
Telefonica del Peru SAA			1			1
Cia Minera Atacocha SA				1		1
Banco Continental Peru					1	1
Electricidad de Caracas			1			1
CANTV				1		1
Total	2	5	6	3	1	17

Another important problem is the possibility for an event-induced variance increase. From Figures 5 and 6, there seems to be an event-induced variance, so one needs to account for this problem. It is also remarkable the similarity among the results of both specifications with and without downside risk. However, as expected, abnormal returns with the partial integration model with downside risk are higher than the ones obtained with the model without downside risk.

Tables 4 and 5 report the statistical significance of average cumulative abnormal returns. Parametric tests J1 and J2 show statistically significant positive abnormal returns ranging between 3.1% and 8.2% for one day before and one day after the announcement of the first tender offer. This result is robust across both specifications. Furthermore, the BMP test (J3) is able to detect positive abnormal returns ranging between 0.18% and 8.2% for different windows mainly before the announcement date. However, abnormal performance due to information leakage is of low magnitude because abnormal returns range between 0.18% and 0.48%. It is worth noting that the partial integration model with downside risk yield more significant abnormal returns than the partial integration model without downside risk.

The performance of the partial integration market model with downside risk even improves when the generalized sign test is used. In this case, the generalized sign test is able to detect not only positive abnormal performance before, but also after the announcement date of a tender offer. Nevertheless, the market overreaction is of low magnitude (0.17%).

In general, the results show a positive abnormal return of about 8% for the announcement date of a tender offer and low positive abnormal returns for the days before and after the announcement date.

5. Conclusion

Consistent with the previous literature, the results obtained show that tender offers in South America do convey good news to the market in the way of positive abnormal performance for the announcement date. However, the reported abnormal performance (8%) is substantially lower than the one reported by the studies reviewed in the introductory part.

The reason for the above result lies in the different views about South American stock markets. In this research, one believes in the view of partially integrated capital markets instead of the full-segmented view. In this scenario stock returns are also sensitive to world events, so abnormal returns cannot be as large as in the case of a full-segmented capital market.

The results also show traces of information leakage and market overreaction. This is consistent with previous literature about stock market efficiency in South American stock markets. For instance, Mongrut (2002) finds short-term overreaction at the LSE. However, the information leakage seems more robust across model specifications than market overreaction.

The later result is not strange because the days previous to the announcement date of the tender offer are contaminated by the negotiations between the target and the bidder company, and the speculation about the acquisition. Hence, it is likely that some information is filtered to the market.

Although this study has presented evidence of positive abnormal performance surrounding the first announcement of a tender offer, several questions remain unanswered: How one may improve the model used in this study to characterize a situation of partial integration? How do abnormal returns relate to the firm ownership concentration? How do they relate to successful and unsuccessful bids? These questions add to a large list of unsolved issues in emerging markets that one hope are going to be addressed in the near future.

6. References

Asquith D. (1988) Evidence on theories of volume, Bid-Ask spreads and return premia among NASDAQ targets of tender offers bids, Doctoral Research Paper, UCLA.

Bekaert G., and C. Harvey (2003) Emerging markets finance. *Journal of Empirical Finance* 10, pp. 3-55.

Bekaert G., C. Erb, C. Harvey, and T. Viskanta (1998) Distributional characteristics of emerging market returns and asset allocation. *Journal of Portfolio Management*, pp. 102-116.

Bodnar G., B. Dumas, and R. Marston (2003) Cross-border valuation: The international cost of equity capital. *National Bureau of Economic Research (NBER)* working paper 10115.

Boehmer E., J. Musumeci, and A. Poulsen (1991) Event-study methodology under conditions of event-induced variance. *Journal of Financial Economics* 30, pp. 253-272.

Bredley M., A. Desai, and H. Kim (1983), The rationale behind Interfirm Tender Offers, *Journal of Financial Economics* 11, pp.183-206.

Brown S. and J. Warner (1985) Using daily stock returns: The case of event studies. *Journal of Financial Economics* 14, pp. 3-31.

Brown S. and M. Weinstein (1985) Derived factors in event studies. *Journal of Financial Economics* 14, pp. 491-495.

Campbell J., A. Lo and C. MacKinlay (1997) The econometrics of financial markets. Princeton University Press, New Jersey.

Cohen H., G. Hawawini, S. Maier, R. Schwartz, and D. Whitcomb (1983) Estimating and adjusting for the intervalling effect bias in beta. *Management Science* 29, pp. 135-148.

Corrado C. (1989) A nonparametric test for abnormal security-price performance in event studies. *Journal of Financial Economics* 23, pp. 385-395.

Cowan A. (1992) Nonparametric event study tests. *Review of Quantitative Finance and Accounting* 2, pp. 343-358.

Cowan A. and A. Sergeant (1996) Trading frequency and event study test specification. *Journal of Banking and Finance* 20, pp. 1731-1757

Dimson E. (1979) Risk measurement when shares are subject to infrequent trading. *Journal of Financial Economics* 7, pp. 197-226.

Dodd P., and R. Ruback (1977) Tender offers and stockholders returns: An empirical analysis, *Journal of Financial Economics* 5, pp. 351-373.

Dombrow J., M. Rodriguez, and C. Sirmans (2000) A complete nonparametric event study approach. *Review of Quantitative Finance and Accounting* 14, pp. 361-380.

Dyckman T., D. Philbrick, and J. Stephan (1984) A comparison of event study methodologies using daily stock returns: A simulation approach. *Journal of Accounting Research* 22, pp. 1-30.

Estrada J. (2000) The cost of equity in emerging markets: A downside risk approach. *Emerging Markets Quarterly* 4, pp.19-30.

Estrada J. (2002) Systematic risk in emerging markets: The D-CAPM. IESE working paper

Fama E. (1976) Foundations of finance. New York: Basic Books, Inc.

Fuenzalida D., and M. Nash (2003) Efecto de la Ley de OPA en el retorno de la acción en Chile. *Mexican Journal of Economics and Finance* 2, No 4, pp. 305-320.

Jarrell G., J. Brickley, and J. Netter (1988) The market for Corporate Control: The empirical evidence since 1980. *Journal of Economic Perspectives* 2, No 1, pp. 49-68.

Jensen M. and R. Ruback (1983) The market for corporate control: The scientific evidence, *Journal of Financial Economics* 11, pp. 5-50.

MacKinlay C. (1997) Event studies in economics and finance. *Journal of Economic Literature* 35, No 1, pp. 13-39.

Moloney (2002) The Market for Corporate Control, Clemson University, 18th document.

Mongrut S. (2002) Market efficiency: An empirical survey in Peru and other selected countries. *Apuntes* 51, Segundo semestre, pp. 49-85.

Patell J. (1976) Corporate forecasts of earnings per share and stock price behavior: Empirical tests. *Journal of Accounting Research* 14, pp. 246-276.

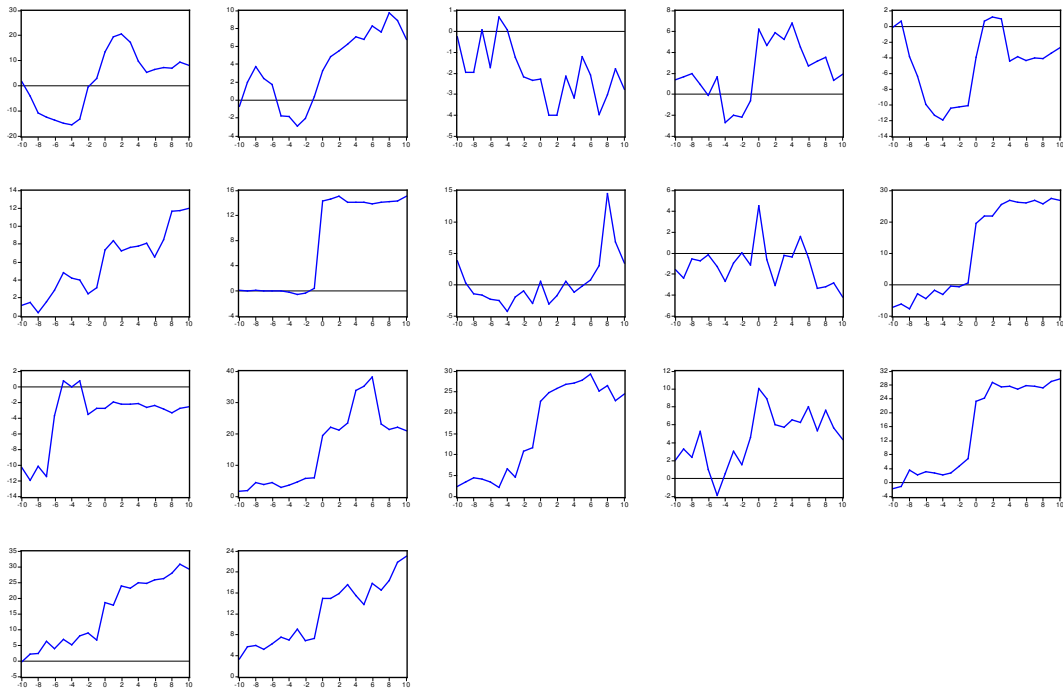
Peterson P. (1989) Event studies: A review of issues and methodology. *Quarterly Journal of Business and Economics* 28, issue 3, pp. 36-66.

Scholes M. and J. Williams (1977) Estimating betas from nonsynchronous data. *Journal of Financial Economics* 5, pp. 309-327.

Stulz R. (1999) Globalization of equity markets and the cost of capital. *National Bureau of Economics Research (NBER)* working paper 7021.

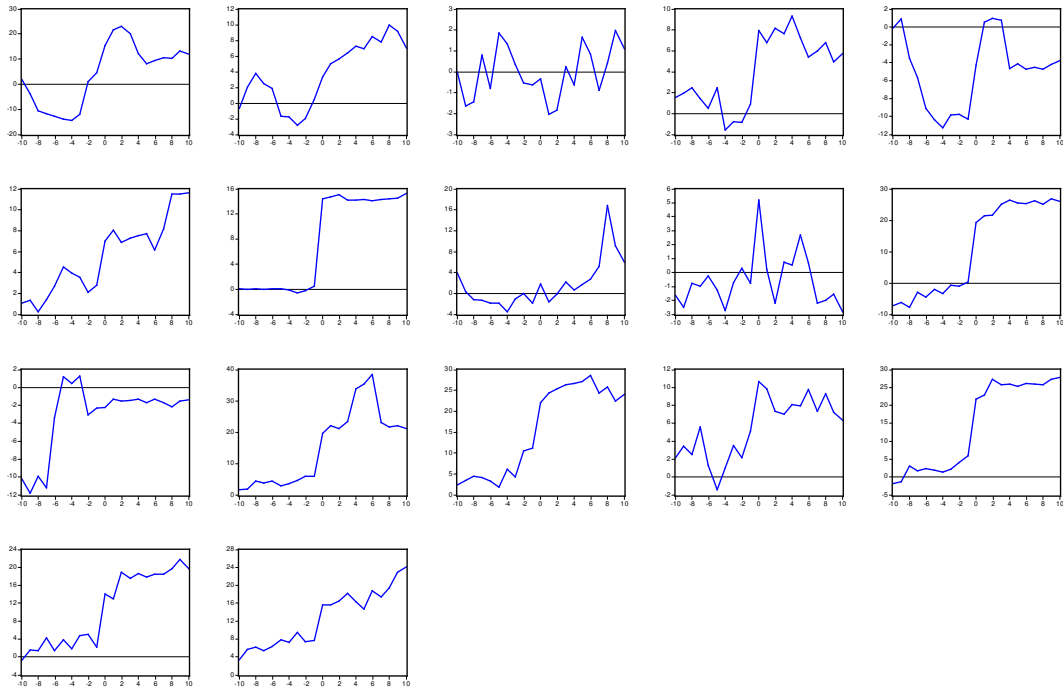
Zingales. L (2000) ¿Por qué vale la pena tener el control de la empresa? *Mastering Management* 6, Diario Estrategia de Chile.

Figure 3
Cumulative abnormal returns by firm
Market Model - GARCH



- | | | | |
|---------------------|--------------------------|--------------------------|-------------|
| (a) Atacocha | (f) CANTV | (k) Laboratorio Chile | (p) Teleste |
| (b) Banco Río Plata | (g) Banco Continental | (l) Luz del Sur | (q) YPF |
| (c) Bandeirante | (h) Electricidad Caracas | (m) Santa Isabel | |
| (d) Banco Bhif | (i) Enersis | (n) Telefónica Argentina | |
| (e) Campos Chilenos | (j) Gener | (o) Telefónica Perú | |

Figure 4
Cumulative abnormal returns by firm
Market Model – GARCH – Downside beta



- | | | | |
|---------------------|--------------------------|--------------------------|-------------|
| (a) Atacocha | (f) CANTV | (k) Laboratorio Chile | (p) Teleste |
| (b) Banco Río Plata | (g) Banco Continental | (l) Luz del Sur | (q) YPF |
| (c) Bandeirante | (h) Electricidad Caracas | (m) Santa Isabel | |
| (d) Banco Bhif | (i) Enersis | (n) Telefónica Argentina | |
| (e) Campos Chilenos | (j) Gener | (o) Telefónica Perú | |

Figure 5
Average abnormal returns
Sample of 17 firms

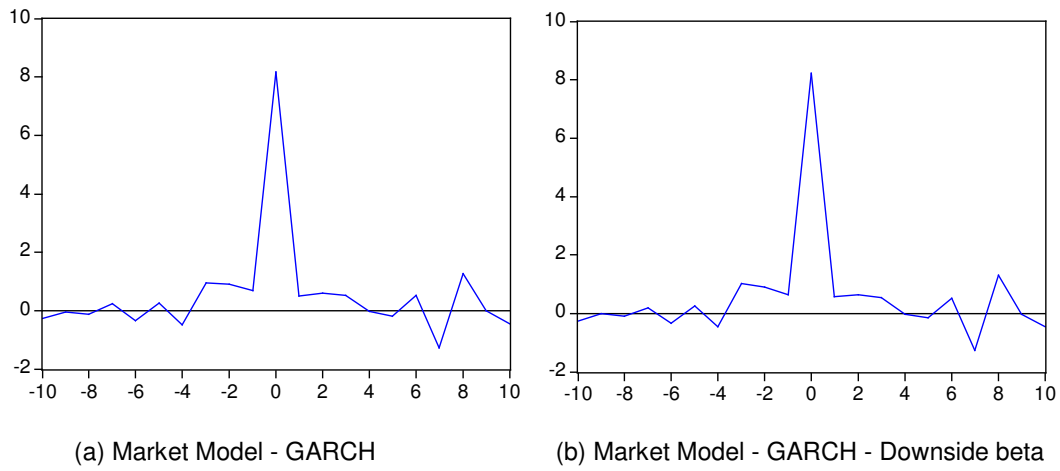


Figure 6
Average cumulative abnormal returns
Sample of 17 firms

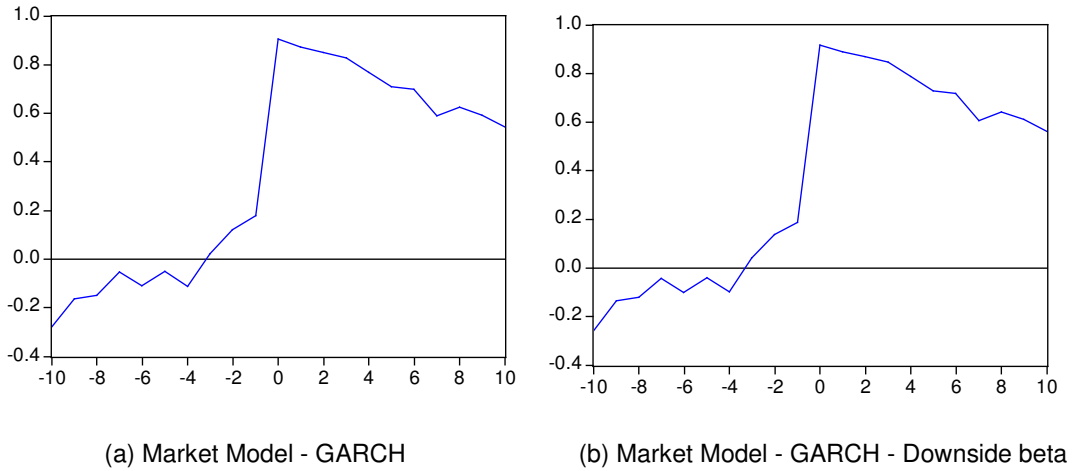


Table 4: Statistical significance of Average Cumulative

Abnormal Returns (CAAR)
Partial integration Market Model - GARCH (1,1)
(N = 17 firms)

(t1,t2)	CAAR (%)	J1	J2	J3	J4
(-10,10)	0.54294	0.70305	0.71237	3.09040***	1.01504
(-5,5)	1.08343	1.29441*	1.18900	2.78262***	3.04512***
(0,0)	8.18108	139.07835***	138.45045***	1.24471	3.04512***
(-1,1)	3.12194	2.91974***	4.17551***	1.55123*	1.52256*
(-10,-1)	0.17821	0.30173	0.43948	1.97609**	0.00000
(-5,-1)	0.46707	0.89619	0.79781	1.87257**	0.00000
(1,10)	0.14386	0.23240	0.41322	-0.01160	0.50752
(1,5)	0.28026	0.52116	0.93904	-0.79183	-0.50752

* Significant at 90% level of confidence
 ** Significant at 95% level of confidence
 *** Significant at 99% level of confidence

Table 5: Statistical significance of Average Cumulative
Abnormal Returns (CAAR)
Partial integration Market Model – Downside risk GARCH (1,1)
(N = 17 firms)

(t1,t2)	CAAR (%)	J1	J2	J3	J4
(-10,10)	0.56032	0.72580	0.76032	3.57386***	1.97122**
(-5,5)	1.10574	1.32020*	1.25122	3.00266***	3.44964***
(0,0)	8.21012	139.57206***	138.94193***	1.24350	3.44964***
(-1,1)	3.14759	2.94533***	4.31509***	1.56082*	1.97122**
(-10,-1)	0.18783	0.31902	0.46372	2.15453**	0.98561
(-5,-1)	0.47546	0.91376	0.81022	2.37543***	1.47842*
(1,10)	0.16783	0.26999	0.49184	0.40454	1.47842*
(1,5)	0.31515	0.58017	1.06125	0.19473	0.00000

* Significant at 90% level of confidence
 ** Significant at 95% level of confidence
 *** Significant at 99% level of confidence